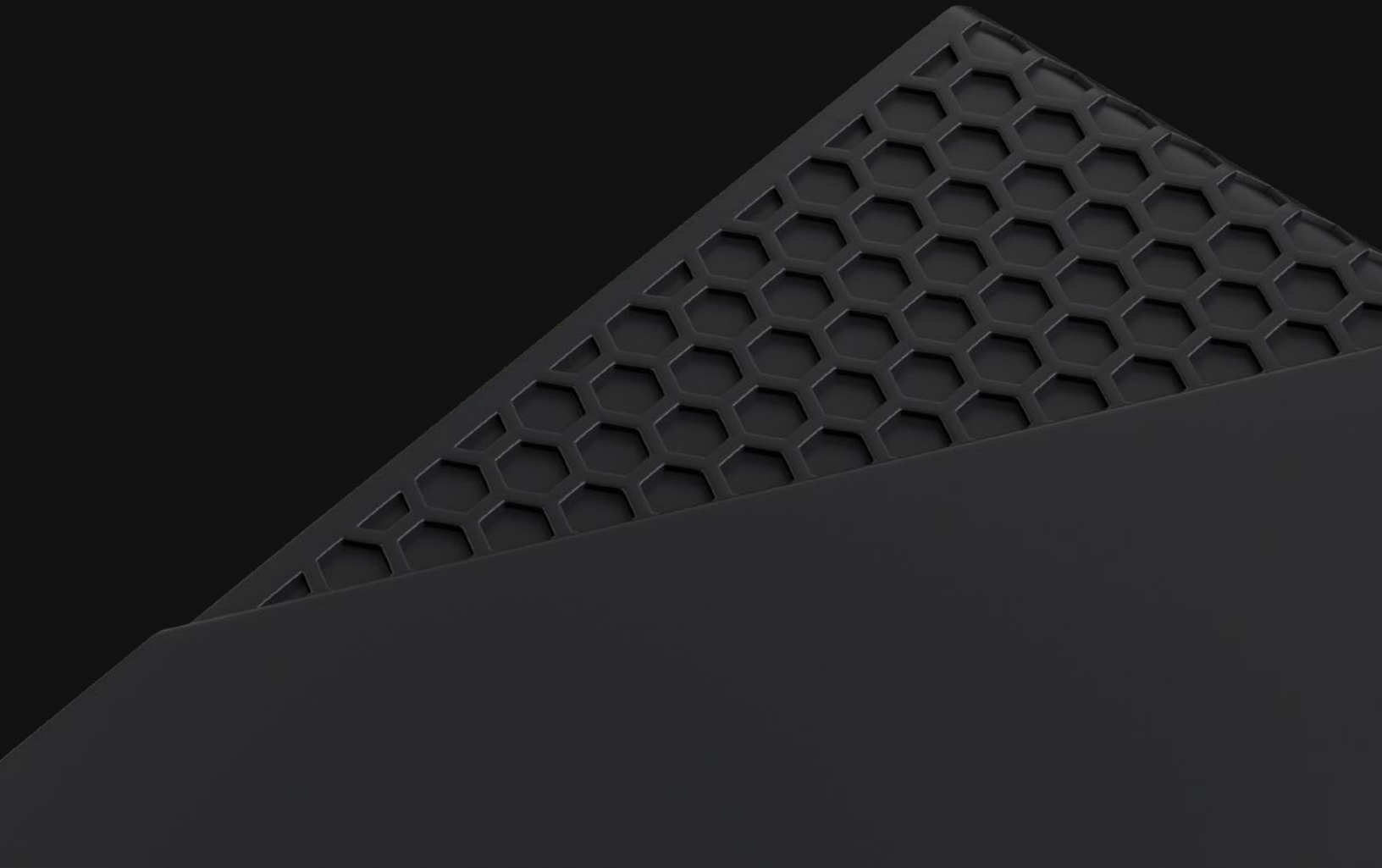


The Rock Enterprise Specifications





Meet The Rock

A next-generation touchless access control solution that future-proofs physical security while decreasing friction.



Alcatraz helps access control environments go touchless while increasing physical security posture.

The Alcatraz Rock is designed to offer enterprise-grade touchless access control in single-factor (face) and dual-factor (face & badge) hybrid mode, with the option to turn on mask detection, keeping buildings in compliance. Tailgating alerts reduce the need for complex hardware and security guards, always checking if someone does not belong.

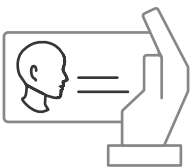
Key Benefits

- Frictionless access control reduces touch points.
- Detect wearing masks and control access based on compliance.
- Mitigate risk, reduce the need and expense for security officers.

Secure 3D Facial Authentication

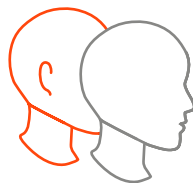
- 1FA** | For environments that allow a completely frictionless face-only access control experience. Users are passively authenticated as they go through spaces.
- 2FA** | For environments that require more security without increased friction, dual factor face & badge mode is available. Users are authenticated based on the security needs of entry points.

Enrollment Intelligence



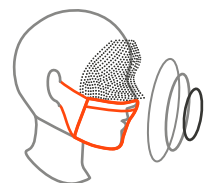
Users self-enroll using their current badges. Artificial intelligence works continuously while learning and improving.

Tailgating Intelligence



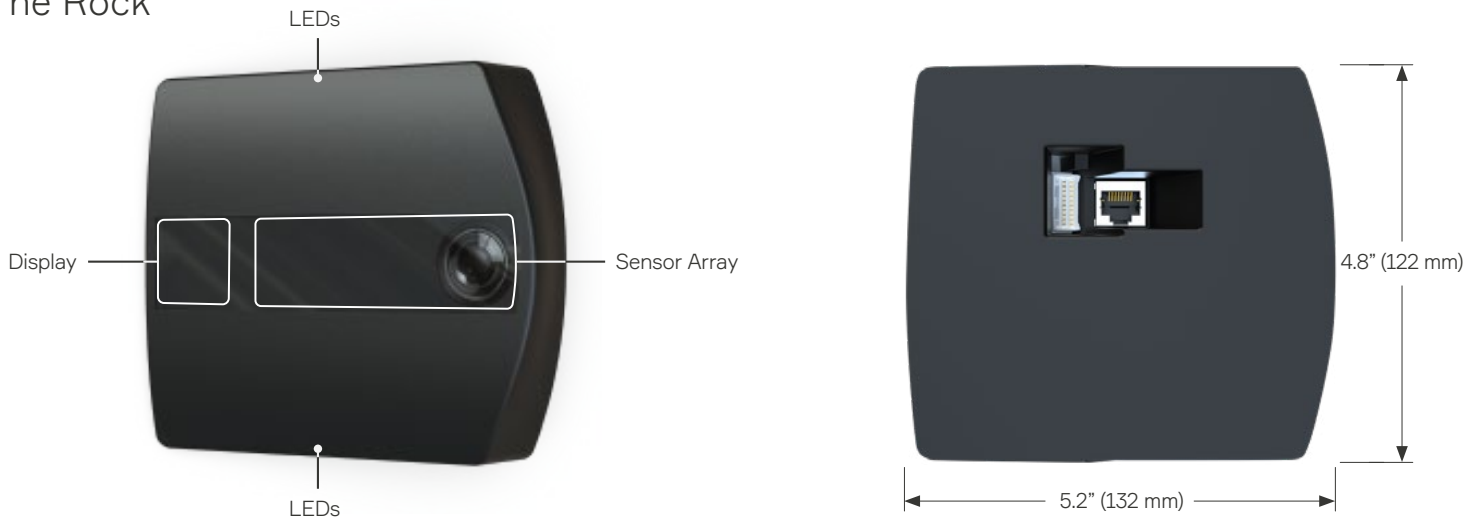
Passively sensing in the background. Detect vs. prevent tailgating based on physical security needs per entry point.

Mask Intelligence



Access control based on mask detection. The Rock continues transmitting badge numbers to Access Control System.

The Rock



Biometrics	FAR (1:N)	Up to 0.001%
	Per Device (1:N)	10,000 profiles
	Per Account (1:N)	unlimited profiles
	Throughput	30 People Per Minute
	Authentication Range	7" - 72" (17.7cm - 182.9cm)
Connectivity	Access Control Input & Output	Wiegand, OSDP*
Tamper	On-Board Tamper	Yes
Video	FOV	110 °H x 90 °V
Network	Network	10/100/1000BASE-TX
	ONVIF	ONVIF® compliant with Profile S, Profile T*
	Security	TLS 1.2 encryption, 802.1x port based authentication**
Electrical	Power Source	PoE+: UL294B Listed PoE+ Source recommended
Environmental	Operating Temperature	-20 °C to +66 °C (-4 °F to 150 °F)
Certifications	Certifications/Directives	UL, ULC, CE, ROHS, Reach (SVHC), WEEE
	Environmental	IP4X Weather Rating, IK4 Impact Rating

* Coming Q4 2020 | ** Coming Q1 2021

Built for Physical Access Control in Enterprise

- As easy to set up as a badge reader
- Uses existing Wiegand / OSDP wiring
- Works with any access control system
- POE+ connectivity
- Enterprise-grade networking & security
- On-prem and Cloud options
- 1FA & 2FA hybrid options

